

# 2017 Lìzé Puppet Art Colony Artist-in-Residence Program Call for Applications

To apply for the Artist-in-Residence Program, Taiwanese and international applicants must be over twenty years of age who fit one of the following three areas:

- ✓ Artists of the traditional puppet arts
- ✓ Artists of the contemporary puppet arts
- ✓ Artists of other artistic fields who are interested in incorporating puppet arts into their creations

## Program Description

Lizé Puppet Art Colony in Yilan is a base for puppetry art founded by the 18-year-old world- renowned theater troupe, Puppet & Its Double Theater. The colony site was originally a group of deserted barns. After three years of remodeling, the three old barns are transformed into fully equipped rehearsal hall, woodshop, artist work space and performance studio. Since 2014, Lizé Puppet Art Colony invites international puppet masters to hold workshops and organizes activities, to make the colony an important platform in Asia for puppet artists around the world.

Since 2016, Lizé Puppet Art Colony organizes the artist-in-residence programs, which was set to be the exchange platform for the puppet artists all over the world. The theme of 2017 is "Puppet in action!" It encourages artists to try performing or displaying an installation art at the street, and interacting with people. All artists that are knowledgeable, interested in and feel inspired by the theme are welcome. Please see the description below before submitting application.

1. The program will select four artists in total. Through the collaborative and creative platform, the artists are given an opportunity to get to know and share experiences with one another, also to stimulate, observe and support the creative process and presentations of one another, and perhaps to discuss the difficulties encountered, among other challenges.
2. The organizer will help each artist to choose their ideal workplace.
3. Provide artistic and technical consultants.
4. The presentation (Artists can choose a or b)
  - a. Present two shows of a 10 to 20-minute piece in "International Lizé Puppet Arts Festival" on Saturday, November 18 – Sunday, November 19, 2017.
  - b. Display an installation art on the selected space (Lizé barn or Lizé street). Exhibition period: Nov. 17- Nov.19. (The artists can extend the period by mutual consent.)

## Duration of Residency and Location

- Date: Residencies will be starting from Sept. 15 – Nov. 20, 2017. on-site stay is required. A minimum 30-day, a maximum 45-day,
- Location: Lìzé Puppet Art Colony (No.37-1, Lize E. Rd., Wujie Township, Yilan County 26841, Taiwan) Details of the venue will be provided.

## Travel Cost and Accommodation

- Stipend for a round-trip plane ticket (economy class) will be provided for each international artist's travel from his or her country of residence to Taiwan.
- During the residency, communal accommodation in Lìzé Puppet Art Colony will be provided.
- Basic travel insurance will be provided during artists' stay in Taiwan. International artists are responsible for the insurance of international travel.

## Fees

- Native Artist: Daily expense allowance & material fee will be total net fee of NT\$30,000 for each artist-in-residence.
- Foreign Artist: Daily expense allowance & material fee will be total net fee of NT\$30,000 for each artist-in-residence.

## Other Rights and Obligations

### ■ **The Organizer will provide the following:**

1. Working spaces. (For details of working spaces in Lìzé Puppet Art Colony, please see attachment.)
2. Information on local living, culture and history; providing artistic and technical consultations.
3. Assistance on collaboration opportunities.
4. Information on art and culture activity.
5. Assistance in arranging educational activities in schools and communities.
6. Space and technical assistance for final presentation.
7. Arrangement for presentations viewing and ideas exchange.

### ■ **Artists-in-Residence are expected to be able to accomplish the following:**

1. Be able to communicate in English.
2. Complete the required minimum 30-day on-site residency.
3. Prepare and come with information and basic tools for their creations and also personal living necessities.
4. Participate in International Lìzé Puppet Arts Festival activities, including the press conference, opening reception, performances, discussion roundtables, international forums and closing ceremony.
5. Participate in at least one educational activity in schools or communities.
6. All works created during the residency and their related video, audio and printed recording are co-owned by the creator and the Lìzé Puppet Art Colony. The Organizer is to use them for research and promotion purposes while the ARTIST retains copyrights to their own works. If the artist will reproduce their work in the future, please specify: "The project was supported by Lìzé Puppet Art Colony- Artist-in-Residence Program during the working process."

## Notes

- Artists failing to meet the minimum length of residency will be disqualified and not be funded the daily expense allowance and the creation grant.
- The contents of the program are provided by the Organizer. If the artist-in-residence wishes to incorporate other recourses into the program, prior notice and approval from the Organizer is required.
- All subsequent developments of projects created during residency such as the creations, interactions and international collaborations are welcome and encouraged.

## Application Process

- Please send **Application Form, proposal for Artist-in-Residence, personal resume and work portfolio**, and **video recordings of previous works (two or more)** to **[lize.puppet@gmail.com](mailto:lize.puppet@gmail.com)** in either Chinese or English.
- Please read the program description above. For clarification or more information, please contact 886-3-9501977 (Ms. Lin). A committee will be formed by the Organizer to review applications. Due to limited resources and quota, not all applicants can be accommodated. Those not selected are welcome to participate in other related projects in the future.
- International applicants should take note that all travel expenses will be reimbursed after arriving in Taiwan. Please make allowance for expenses occurred before arrival.
- Please send application through e-mail with the heading “Lìzé Puppet Art Colony- Artist-in-Residence Program and the name of applicant.”
- Application and Notification: Application procedures will be announced in late-May 2017 and subsequent inquiries are welcome. Applications are to be received from June 1-20, 2017. Notification of acceptance will be sent in late-June. Accepted applicants are expected to sign and return their letters of intent before the end of June, 2017.

# Lizé Puppet Art Colony

Year Founded: 2014

Country: Taiwan, R. O. C.

Nature of operation: private and independent

Fields of Specialty: Puppetry, performing arts and interdisciplinary arts

Language: English and Chinese

Phone: +886-3-950-1977

Fax: +886-3-950-0051

Address: No.37-1, Lizé E. Rd., Wujie Township, Yilan County 268, Taiwan

E-mail: lize.puppet@gmail.com

Official Website : <http://www.puppetx2.com.tw>



Lizé Puppet Art Colony  
利澤.國際偶戲藝術村

# Introduction

Lizé Puppet Art Colony in Yilan is a base for puppetry art founded by the 18-year-old world-renowned theater troupe, Puppet & Its Double Theater. The colony site was originally a group of deserted barns. After three years of remodeling, the three old barns are transformed into fully equipped rehearsal hall, woodshop, artist work space and performance studio.

In addition to producing professional puppet theater performance, the colony actively participates in community development by incorporating local culture into creation in order to enrich, diversify, and further promote puppet arts, so that it becomes an integral part of local community life. Based in Taiwan while reaching out to global communities, Lizé Puppet Art Colony invites international puppet masters to hold workshops and organizes activities, such as artist-in-residence programs, to make the colony an important platform in Asia for puppet artists around the world.



## Location

- No.37-1, Lize E. Rd., Wujie Township, Yilan County 268, Taiwan

Located in Wujie Township, Yilan County, Taiwan, the colony is close to Luodong, the largest city of business in Yilan County which is about an hour away from Taipei by bus. Lìzé Village was originally a busy harbor where business vessels visited and the streets were packed with shops. Along with the blockage of the river channel and the running of trains, the town is not as prosperous as before, but is still rich in its tradition and culture with architectures maintaining their hundred-year-old facade. The streets of Luodong are not packed with tourists nowadays, and the life in Lìzé is able to maintain the tranquil and peaceful life style of a small Taiwanese countryside.

## Direction and Transportation

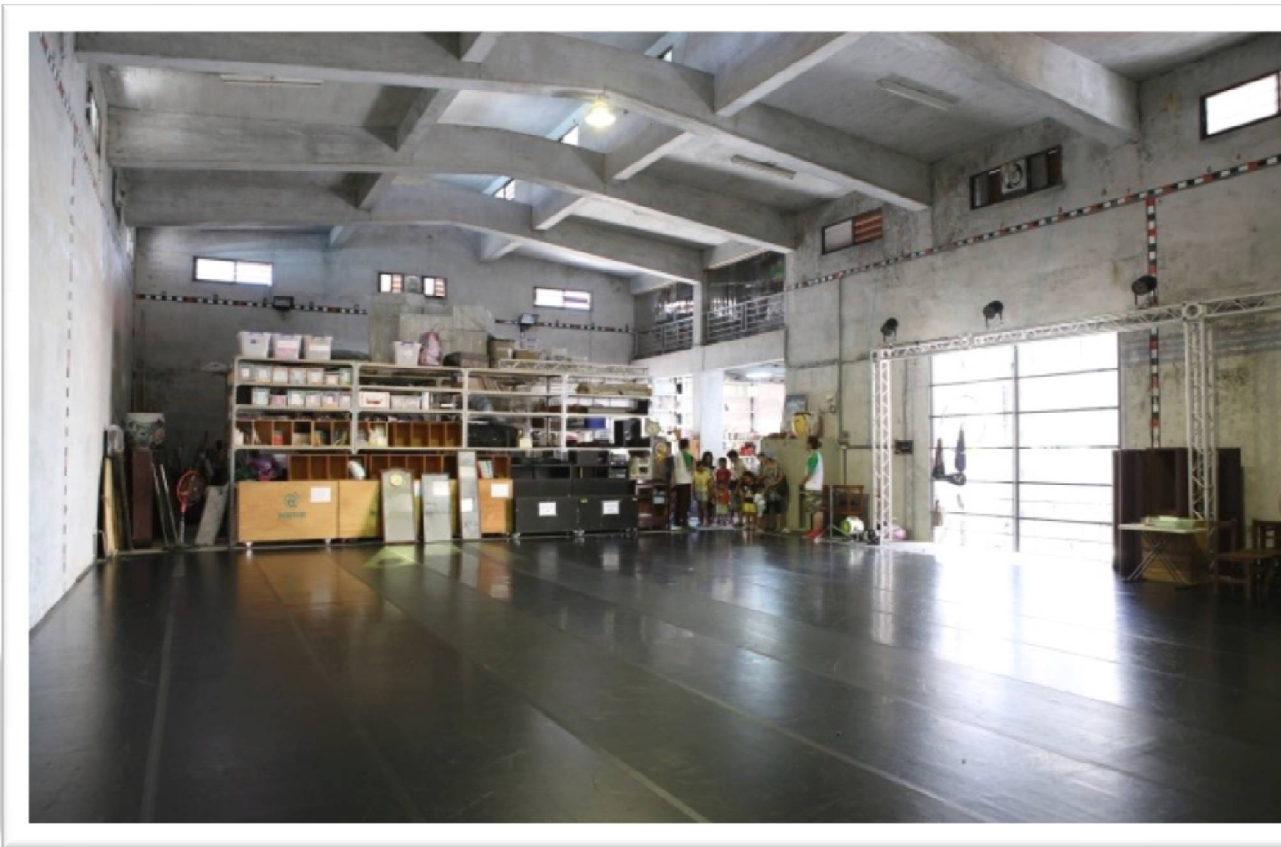
- Nearest International Airport: Taiwan Taoyuan International Airport
- Nearest Train Station: Luodong Station
- Nearest Bus Station: Wujie Station and Luodong Bus Station
- Drive: An hour drive from Taipei city
- Longitude & latitude: 24.667568,121.823470



## Space and Facilities

- Rehearsal Hall:

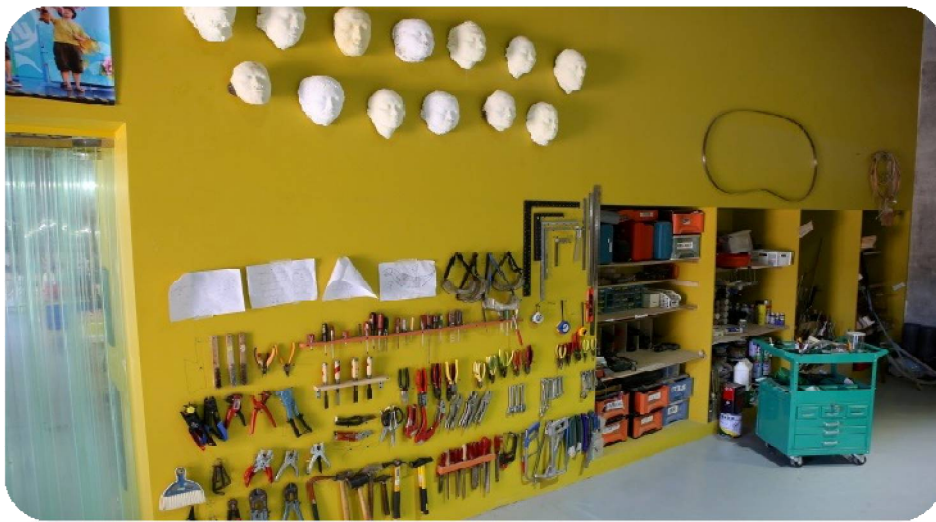
Five meters in height. L:14m x W11m in size. No pillars. With mirror-lined walls, a basic stereo system (without player) and four LED PARs (in yellow only).



## Space and Facilities

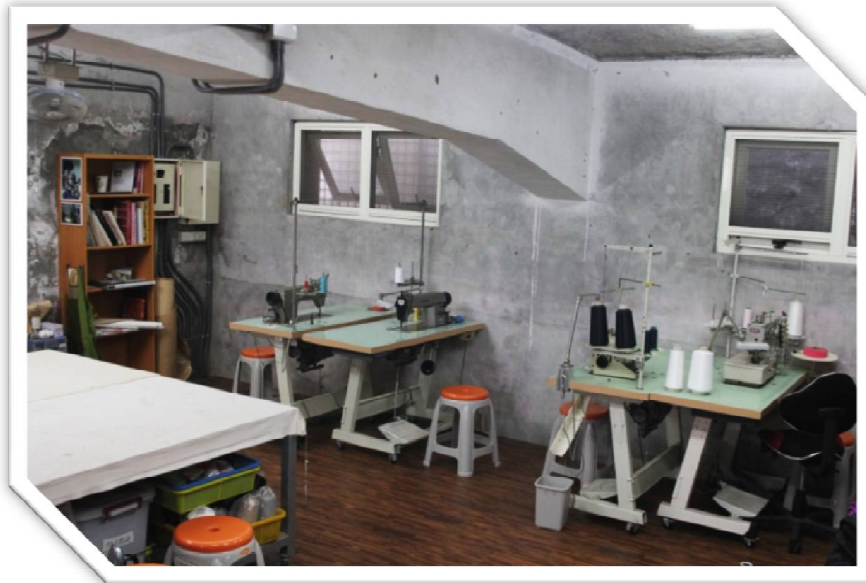
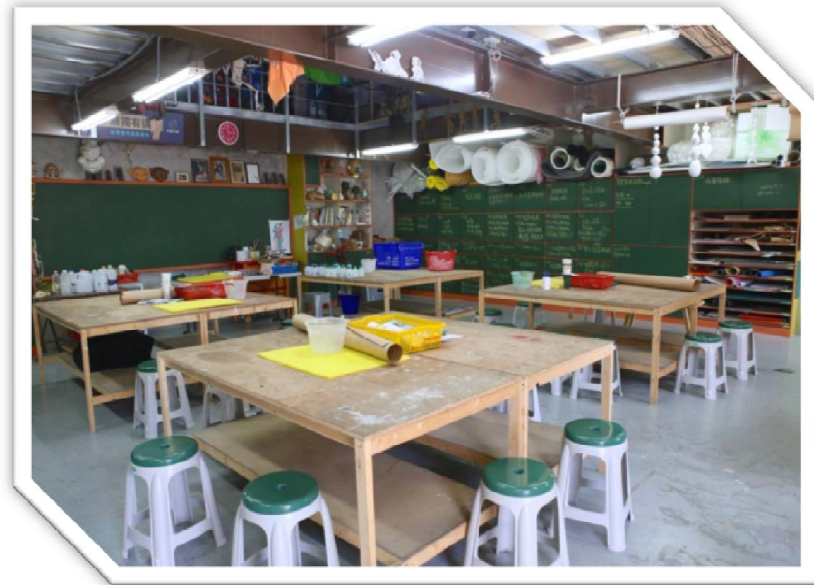
- Woodshop:

With basic manual tools, shared working tables, a table saw, three band saws, portable jigsaws, trimming machines, two grinders, a desktop jigsaw and an angle cutting machine. Other supplies, including hardware and timber parts, paint sprays and glues, are also provided. Artists are to bring their own supplies that are not listed here.



## Space and Facilities

- **Craft Room:**  
With shared working tables, paints, carving tools, and basic tools (scissors, cutter knives). Artists are to bring their own supplies that are not listed here.



- **Sewing Room:**  
With two industrial sewing machines, a household sewing machine, an overlock machine, a cover stitch machine, shared cutting tables, irons, basic sewing supplies (scissors, needles, pins, threads, chinks and rulers) and all kinds of fabrics. Artists are to bring their own supplies that are not listed here.

## Space and Facilities

- **Small Performance Studio:**  
Four meters in height. Stage space around 10m<sup>2</sup> in size. The studio has a capacity of 40 audience seats with basic lighting system (including color changing LED PAR), stereo system, movable seating and a concession stand.
- **Lounge:**  
The space invites artists to take a break and interact with one another. The lounge is stocked with an extensive collection of books on puppetry.



## Space and Facilities

- Outdoor Area:  
The outdoor area includes an open space around 418m<sup>2</sup> in size and a walled-in space around 175m<sup>2</sup> in size for creative experiments.



# Artist-in-Residence Program

Lizé Puppet Art Colony organizes the artist-in-residence programs, which was set to be the exchange platform for the puppet artists all over the world.



# Master Class - String Puppetry

- Bernd Ogrodnik, Iceland



# Master Class - String Puppetry

- Alice Gottschalk, Germany



# Master Class - Mask

- Tracing Back to the Future with Theatre Wegajty, Poland



# Master Class - Czech Family Paper Theater

- Marek Zákostelecký, Czech



## Workshop - Giant Puppet Making



## Workshop - Shadow Puppets



## Workshop - Junior Camp



## Holding Festival - 2016 Asia Pacific Traditional Arts Festival

